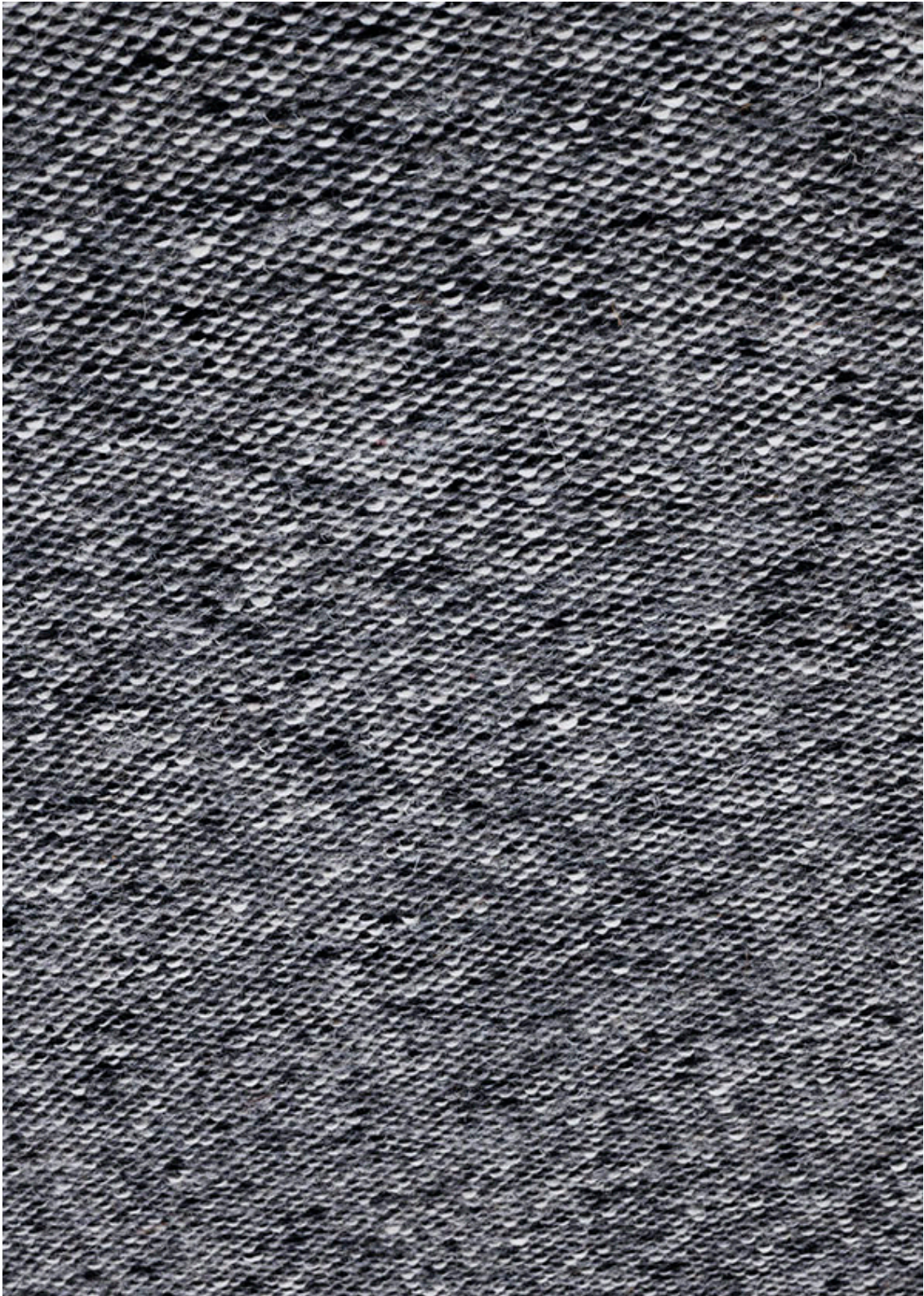


KATEHA[•]



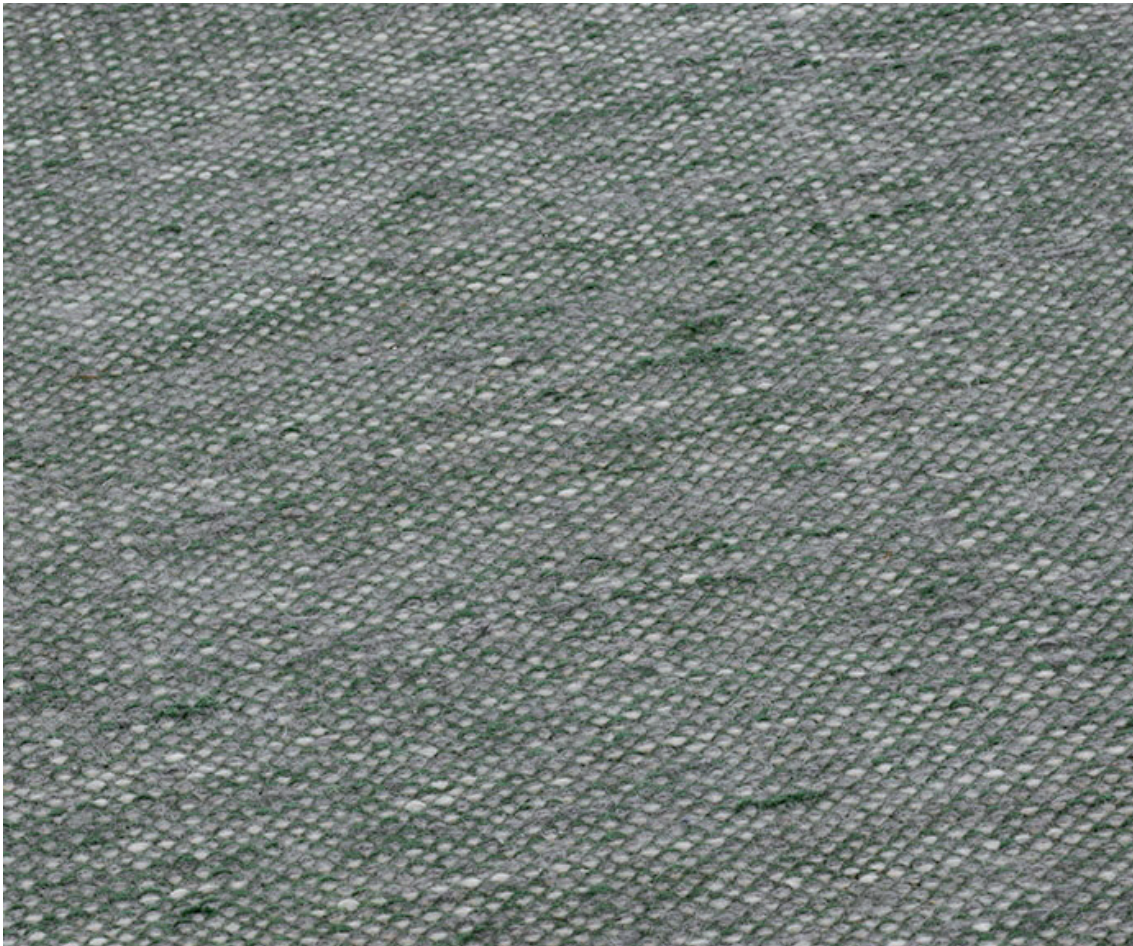
Edda black

EDDA

Design: Barbara Hosak • Handwoven rug in pure new wool from New Zealand.

KATEHA[®]

EDDA is hand woven by skilled weavers in elegant and advanced weaving technique. For the Edda design we use three contrasting colours of wool yarn, and combined with the weaving technique this gives a peaceful 3D pattern and a tactile feeling on the surface of the rug. Edda is suitable for contract interiors and in private homes.



Edda green

Product: Handwoven rug in 100% pure high quality wool from New Zealand

Weft material: Wool

Warp material: Linen

Backing: Reversible

Finish: Woven hemmed linen edge

Height: approx. 8 mm

Weight: approx. 2000 g/m²

Sizes: 80 x 250, 170 x 240, 200 x 300

Custom orders: Possible, maximum width 400 cm, maximum length 1000 cm

Other information:

- Size variations for handmade rugs +/-5%.
- We use renewable natural materials. Dye lot and yarn batch variations may occur.
- Traditionally, wool rugs have been woven on linen warp. We have chosen to weave on linen warp for stability and better durability.
- We recommend rug underlay (anti-slip): For reduced wear, improved comfort, non-slip properties and easier vacuuming.

