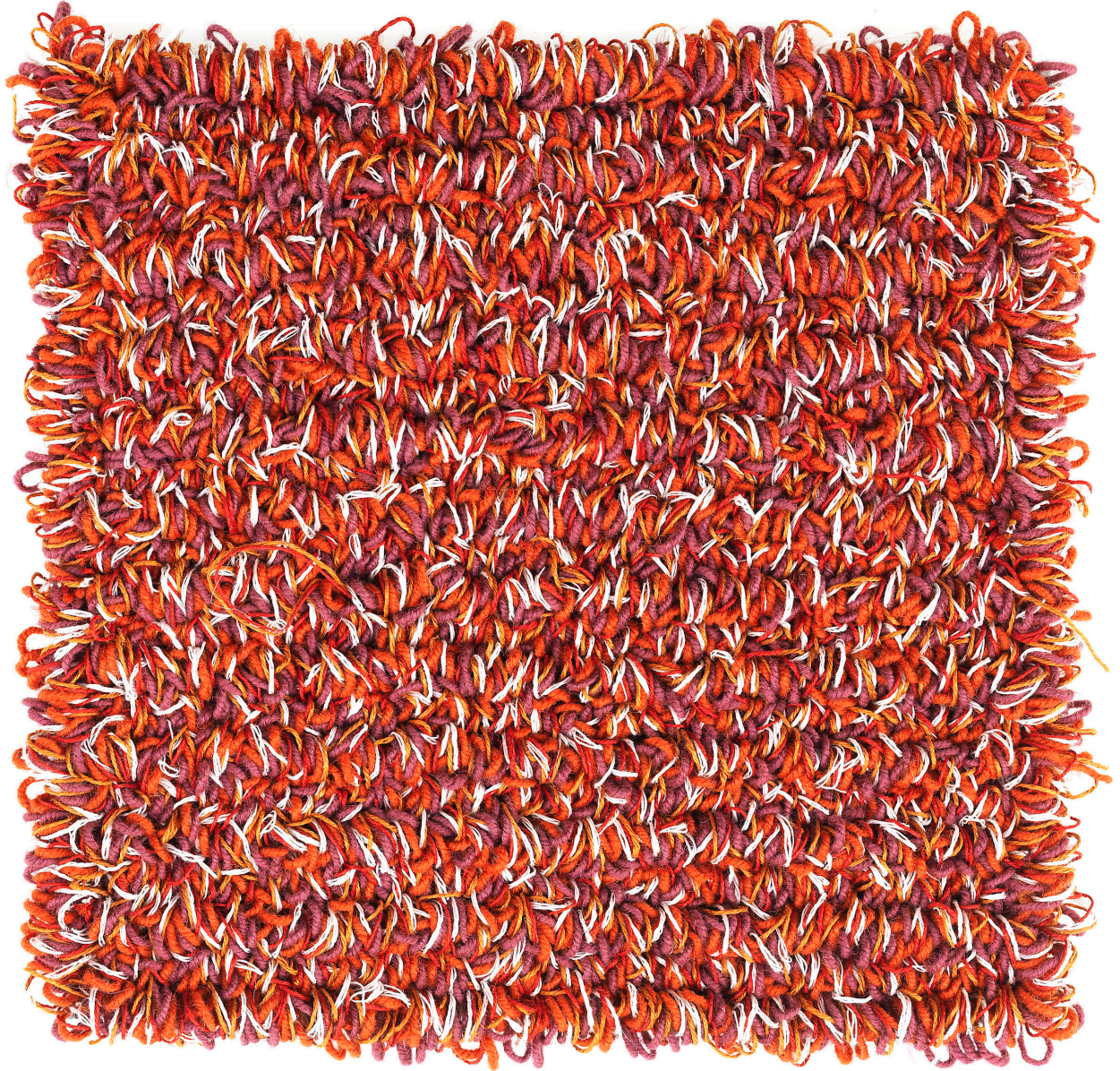


KATEHA[®]



CAMELIA LOOP

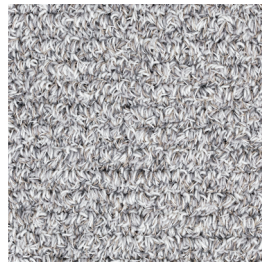
DESIGN: Kateha • Hand tufted rug in hard twisted, worsted wool from New Zealand and twisted linen.

KATEHA[®]

CAMELIA LOOP is a modern variant of rya. It has two different threads of natural fibre, giving a lively, mélange effect. The colour spectrum also means that the rug is perfect for matching with other furnishings.



White



Natural-3



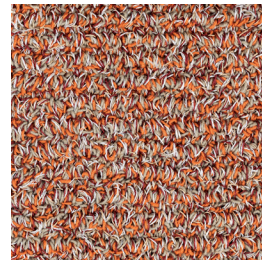
Salt Pepper



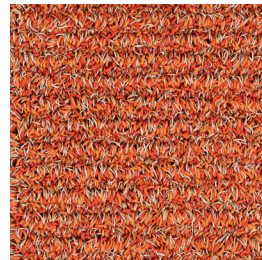
Black-1



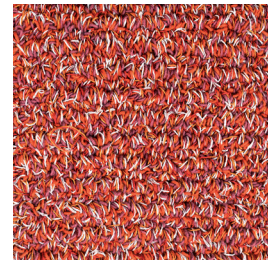
Brown-3



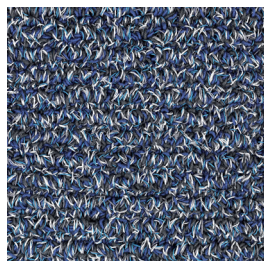
Rust-4



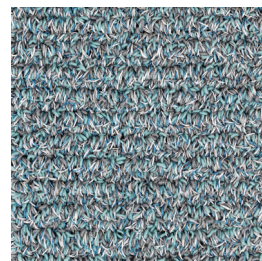
Rust-5



Red-1



Indigo-4



Petrol



Blue

Product: Hand tufted rug in 70% hard twisted, worsted wool from New Zealand and 30% twisted linen

Material: Wool and flax

Base fabric: Polyester

Backing material: Cotton and polyester

Adhesive: Synthetic latex

Number of threads in needle: 2/3

Finish: Edged with band

Pile height: approx. 12/16 mm

Total height: approx. 19 mm

Weight: approx. 4200 g/m²

Sizes: 170 x 240, 200 x 300, Ø220

Custom orders: Possible, maximum width 500 cm, maximum length 1300 cm

Other information:

- Size variations for handmade rugs +/-5%
- We use renewable natural materials. Dye lot and yarn batch variations can occur.
- Pile shedding during first period of use is normal

