

KATEHA^o



CAMELIA PILE

DESIGN: Kateha • Hand tufted rug in hard twisted, worsted wool from New Zealand and twisted linen.

KATEHA[®]

CAMELIA PILE is a modern variant of rya. It uses two different threads of natural fibre, giving a lively, mélange effect. The colour spectrum also means that the rug is perfect for matching with other furnishings. Camelia Pile comes in two different pile lengths: 45 mm, 25 mm.



White-1



Cream



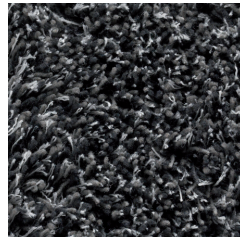
Light grey-2



Natural-3



Salt & pepper



Anthracite



Black-1



Brown-3



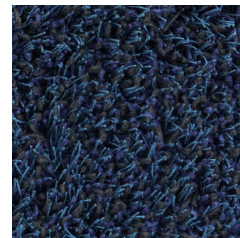
Rust-4



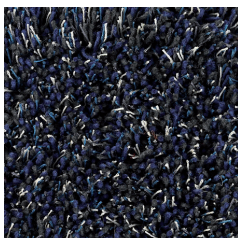
Rust-5



Red-1



Blue



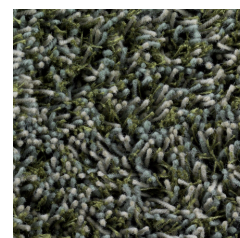
Indigo-4



Petrol



Green grey



Green winter

Product: Hand tufted rug in 70% hard twisted, worsted wool from New Zealand and 30% twisted linen.

Material: Wool and linen

Base fabric: Polyester

Backing material: Cotton and polyester

Adhesive: Synthetic latex

Number of threads in needle: 2/3

Finish: Edged with band

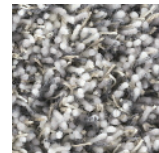
Sizes: 170 x 240, 200 x 300, Ø220

Custom orders: Possible, maximum width 500 cm, maximum length 1300 cm

Other information:

- Size variations for handmade rugs +/-5%
- We use renewable natural materials. Dye lot and yarn batch variations can occur.
- Pile shedding during first period of use is normal

Height and weight specifications

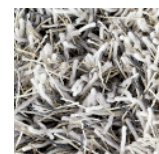


25 mm

Pile height: approx. 25 mm

Total height: approx. 30 mm

Weight: approx. 3600 g/m²



45 mm

Pile height: approx. 45 mm

Total height: approx. 50 mm

Weight: approx. 4000 g/m²

