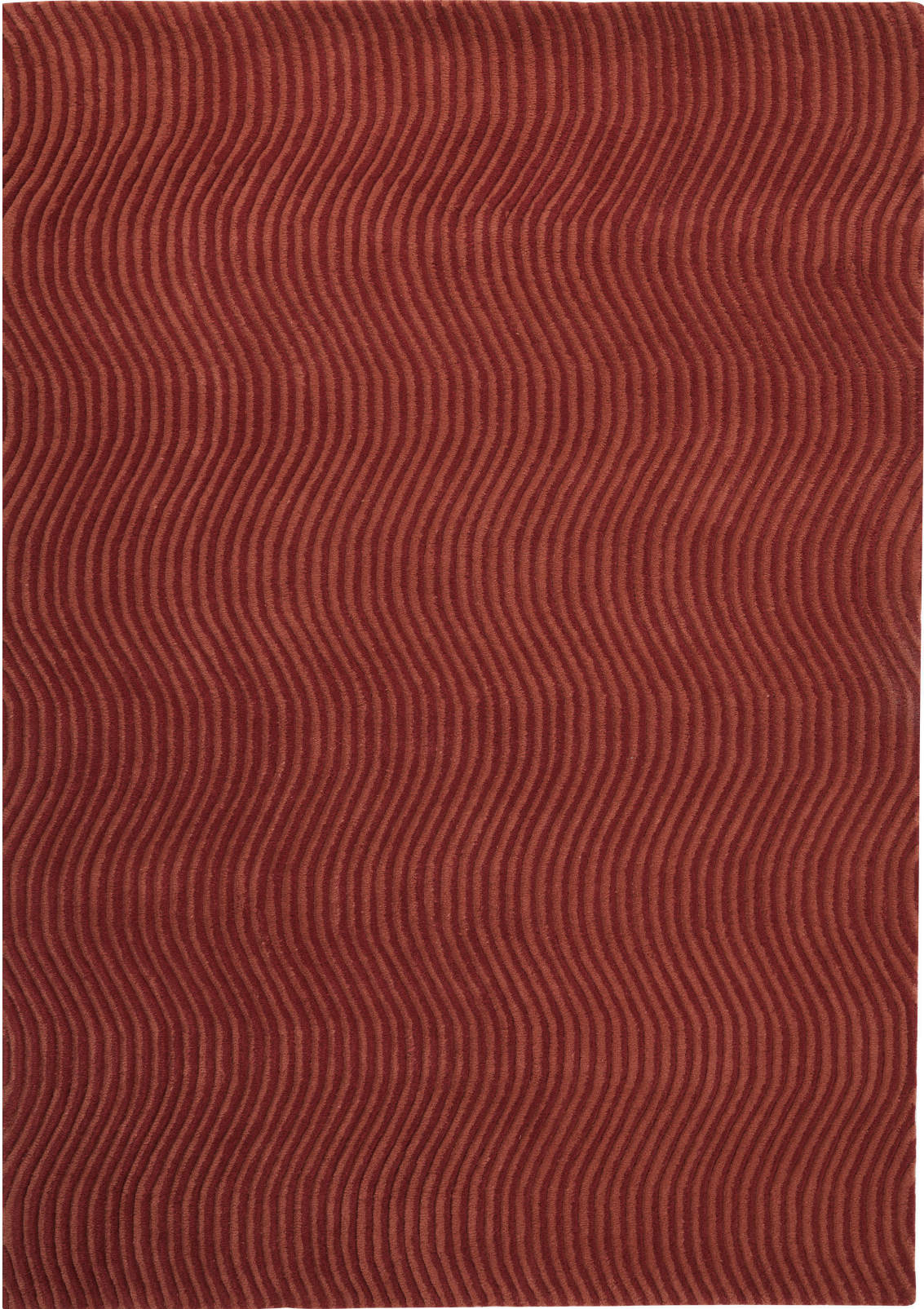


# KATEHA<sup>o</sup>



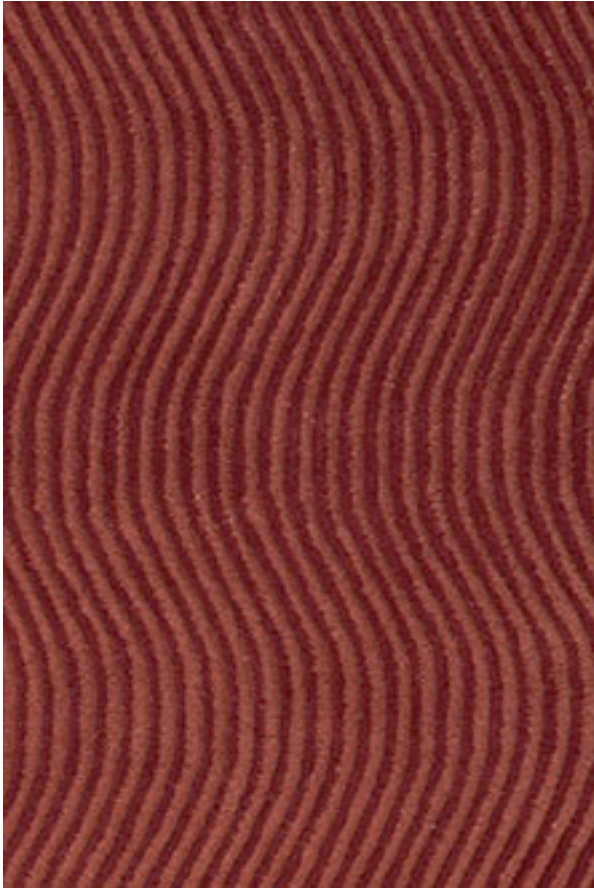
## **DUNES WAVE**

Design: Charlotte von der Lancken • Hand tufted rug in pure new wool.



# KATEHA<sup>®</sup>

**DUNES WAVE** The Dunes rug collection is naturally colour shifting. Depending on your viewpoint, a lighter or darker colour will appear. The design of Dunes, as dunes of sand, explores angular cutting and fine-tuned colours, thus creating an unexpected poetic twist. This Dunes rug is hand tufted in the finest wool, cut by hand to form relief structures in soft wavy lines.



Dusty Red (detail)



Light Grey (detail)



Light Beige (detail)

**Product:** Hand tufted rug in pure wool.

**Material:** Wool

**Base fabric:** Cotton and polyester

**Backing material:** Cotton and polyester

**Adhesive:** Synthetic latex

**Number of threads in needle:** 5

**Finish:** Binding in contrasting colour

**Pile height:** approx. 14-20 mm

**Total height:** approx. 20-22 mm

**Weight:** approx. 4600 g/m<sup>2</sup>

**Sizes:** 170 x 240, 200 x 300, Ø 220

**Custom orders:** Possible, maximum width 500 cm, maximum length 2000 cm

**Other information:**

- Size variations for handmade rugs +/-5%
- We use renewable natural materials. Dye lot and yarn batch variations may occur.
- Pile shedding during first period of use is normal.

