

# KATEHA<sup>o</sup>



## **POND SOUMAK**

Design: Charlotte von der Lancken • Handwoven rug with soumak-twisted pattern edges, in finest New Zealand wool on linen warp.



# KATEHA<sup>®</sup>

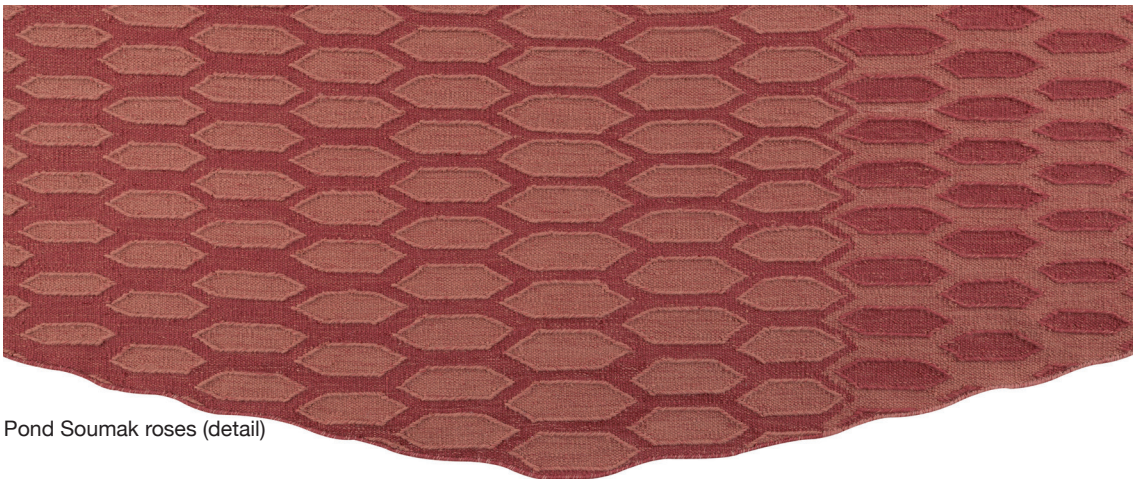
**POND SOUMAK** - Pond is a tactile collection of handwoven rugs with a variation of heights and structures. The pattern is an abstraction of a fish shoal, tightly organized and coordinated in precise arrangements. Fast moving shoals usually form a wedge shape while shoals that are travelling can form squares. This has been interpreted in a collection of handwoven rugs in various colours. Charlotte von der Lancken has worked in close collaboration with Kateha and their weavers, using a combination of weaving techniques in order to achieve the diamond shaped rug and the outlines through soumak-twist weaving. Pond soumak is edged with woven hemmed wool edges in a contrasting colour.



Pond Soumak garden (detail)



Pond Soumak margarita (detail)



Pond Soumak roses (detail)

**Product:** Handwoven rug with soumak-twisting, in pure wool from New Zealand

**Weft material:** Wool

**Warp material:** Linen

**Backing:** Reversible

**Finish:** Woven hemmed wool edge

**Height: approx.** 10-14 mm

**Weight:** approx. 2 000 g/m<sup>2</sup>

**Sizes:** 170x240, 200x300, 216/270

**Custom orders:** Possible, maximum width 400 cm, maximum length 400 cm

**Other information:**

- Size variations for handmade rugs +/-5%.
- We use renewable natural materials. Dye lot and yarn batch variations may occur.
- We recommend rug underlay: For reduced wear, improved comfort, non-slip properties and easier vacuuming.

