

KATEHA[•]



SPIRIT

Design: Kateha • Handwoven rug in linen and pure new wool from New Zealand

KATEHA[®]

SPIRIT The weaving technique gives a faintly checked rug, and the combination of the materials bestow the rug with a distinct textural feeling. The rug is naturally simple and stylish and fits into all kinds of different interiors.



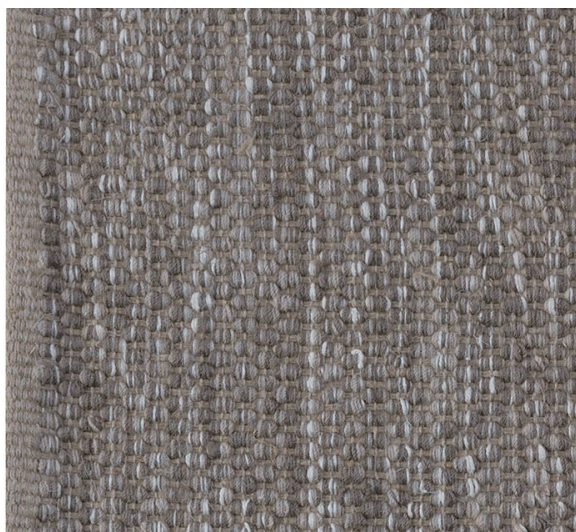
Blue-2



Grey-2



Black-2



Sand



Product: Handwoven rug in linen and 100% pure new high quality wool from New Zealand.

Weft material: Wool and linen

Warp material: Linen

Finish: Woven hemmed linen edge

Backing: Reversible

Height: approx. 14 mm

Weight: approx. 3300 g/m²

Sizes: 170 x 240, 200 x 300

Custom orders: Possible, maximum width 300 cm, maximum length 1000 cm

Other information:

- Size variations for handmade rugs +/-5%.
- We use renewable natural materials. Dye lot and yarn batch variations may occur.
- Traditionally, wool rugs have been woven on linen warp. We have chosen to weave on linen warp for stability and better durability.
- We recommend rug underlay: For reduced wear, improved comfort, non-slip properties and easier vacuuming.

