

KATEHA^o

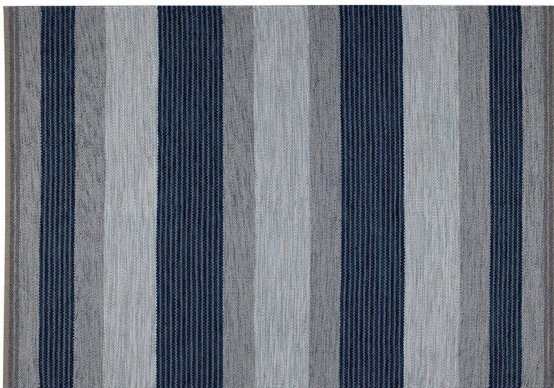


TERRENO

DESIGN: Barbara Hosak • Handwoven rug in pure new wool from New Zealand.

KATEHA[®]

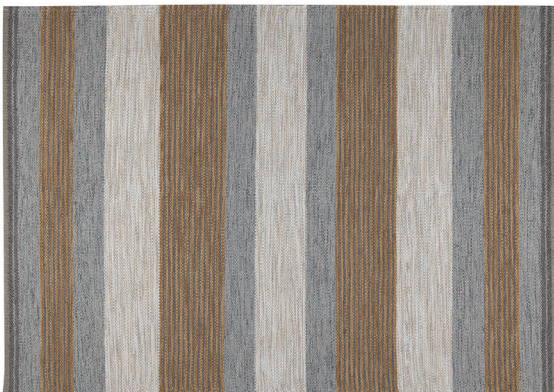
TERRENO. A rug in a completely new quality with a twenty threads thick and luxurious weft. The idea has been there for a long time, to make a design in a warm, very sturdy and tactile structure. Terreno is hand woven with a cotton warp, chosen because its inherent elasticity is needed for this quality. However, we do not compromise with the short side endings, thus Terreno finishes with woven hemmed linen edges for distinct stability. Terreno is available in four different colour compositions, both as runners and large rectangular rugs. The rugs are suitable for contact interiors and in private homes.



Blue



Green



Ochre



Terra

Product: Handwoven rug in pure high quality wool from New Zealand.

Weft material: Wool

Warp material: Cotton

Backing: Reversible

Finish: Woven hemmed linen edge

Height: approx. 10 mm

Weight: approx. 2600 g/m²

Sizes: Standard and custom sizes.

Custom orders: Possible, maximum width 335 cm, maximum length 1000 cm

Other information:

- Size variations for handmade rugs +/-5%.
- We use renewable natural materials. Dye lot and yarn batch variations can occur.
- We recommend rug underlay: For reduced wear, improved comfort, non-slip properties and easier vacuuming.

